



# Elias The Easter Bunny

**Finished size: 45cm/ 17.7inch (including ears)**

**Language: English**

## Materials:

**Yarn:** light weight (3) yarn suitable for amigurumi and a size 2mm crochet hook in:

(The numbers between brackets are color **suggestions** from these brands:

**Catona/Catania/Rainbow by Hobbii (in this order))**

- **Black:** 15-25m = meter/20-30yd = yard (**Catona: 110/ Catania 110/ Rainbow 009**)
- **Off-white:** 65-75m/70-80yd (**105/105/002**)
- **Grey:** 45-55m/ 50-60yd (**242/242/014**)
- **Pink:** 15-25m/ 20-30yd (**604/225/045**)
- **Cream:** 10-20m/10-20yd (**110/403/052**)
- **Light brown:** 75-85m/80-90yd (**503/179/006**)
- **Green:** 130-140m/145-155yd (**205/205/084**)
- **Light purple:** 15-25m/ 20-30yd (**520/226/040**)
- **Blue:** left over bit (**384/397/077**)

**Crochet hook:** size 2mm

**Stuffing – stitch markers – tapestry needle – scissors – pencil – glue – glue gun – cotton buds**

**Cardboard:** small piece – 2mm thick

**Safety eyes:** 2pcs – 10mm diameter – black

**Chopstick:** 1pc – made of wood

**I made this whole pattern with a YARN UNDER stitch but a yarn over stitch is possible too.**

*\*\*The color of yarn that you have to use is mentioned at the back of the row. If nothing is mentioned, use the same color as the previous row.*

*\*\*Only work in the front or back loops when this is mentioned. If nothing is mentioned, work in both loops.*

*\*\*I used an invisible decrease stitch instead of a regular decrease stitch.*

*\*\*The “ch1” from “ch1 and turn” does not count as a stitch*

### **Abbreviations:**

- **Ch(s):** chain(s)
- **Sl st:** slip stitch
- **Sc:** single crochet
- **Hdc:** half double crochet
- **Dc:** double crochet
- **Inc:** increase = make 2 single crochet in the same stitch
- **Dec:** decrease = single crochet 2 stitches together
- **Hdc inc:** half double crochet increase = make 2 half double crochet in the same stitch
- **Dc inc:** double crochet increase = make 2 double crochet in the same stitch
- **Sc3tog:** single crochet 3 together = work 3 stitches together with 1 single crochet

### **Important information:**

**\*2sc, inc, 2sc\*** repeat till the end = 2sc, inc, 2sc, 2sc, inc, 2sc, 2sc, inc, 2sc, ...

**\*3sc, inc\*** repeat till the end = 3sc, inc, 3sc, inc, 3sc, inc, ...

**This pattern is a PAID pattern and there is a COPYRIGHT on it. The pattern is therefore for personal use only and may NOT be copied, sold, resold, translated, claimed as your design, distributed, shared, published, posted online... in any form without my consent. Not even part of it!!!**

**If you are in possession of this pattern but did not pay for it, then it was shared illegally and that is NOT ALLOWED!!**

**If you want to ask a question about this pattern on Facebook for example, please use a photo of ONLY THE ROW YOU HAVE A PROBLEM WITH, NOT several rows, half a page or even more because that is against copyright laws.**

**You can sell the finished Elias Easter Bunny doll in small quantities BUT NOT THE PATTERN ITSELF! Please mention that the pattern is by Craftygenesindonesia and where it can be purchased.**

---

**Index:**

- Pattern = page 4
- Contact Info = page 19
- Social Media Info = page 19
- Tutorial Info = page 20

## Pattern:

### Shoes and legs (make 2):

Row 1: ch9 **with black**

- Work around the chs now (see diagram)

Row 2: start in the second ch from the

hook: inc, 6sc, inc twice in last ch,

6sc, inc (20)

- Work in continuous rows now

Row 3: inc twice, 6sc, inc 4 times, 6sc, inc twice (28)

Row 4:

- step 1: 2 times \*1sc, inc\*,
- step 2: 6sc,
- step 3: 4 times \*1sc, inc\*,
- step 4: 6sc,
- step 5: 2 times \*1sc, inc\* (=36 in total)

Row 5: 1sc in each **back loop** (36sc)

Row 6-8: 1sc in every stitch (36)

- Mark stitch 30

Row 9: **in back loops only & with off-white:**

- step 1: 8sc, ch6,
- step 2: skip the next 21 stitches and continue with step 3, starting in the marked stitch
- step 3: 7sc (=21 in total) **with off-white**

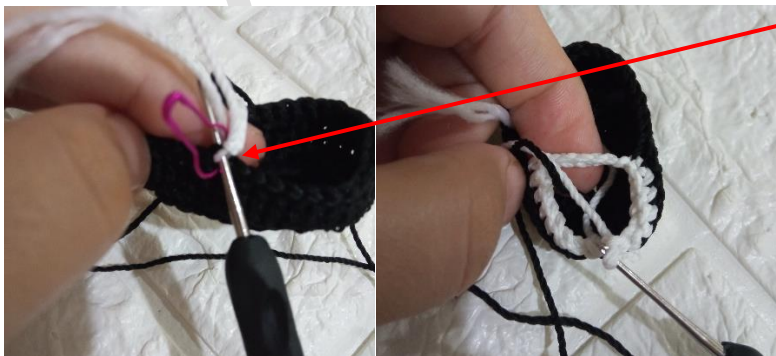
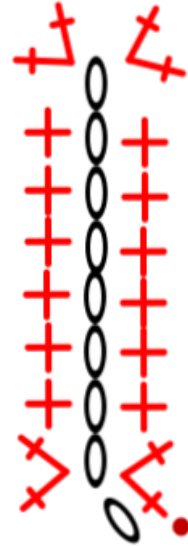
The red dot is the start of row 2

Black= row 1, red= row 2

○ = ch

∨ = inc

⊕ = sc



Row 10: 1sc in each stitch/ch of row 9 (=21)

Row 11: \*5sc, dec\* repeat till end (18)




Row 12-24: 1sc in each stitch (18)

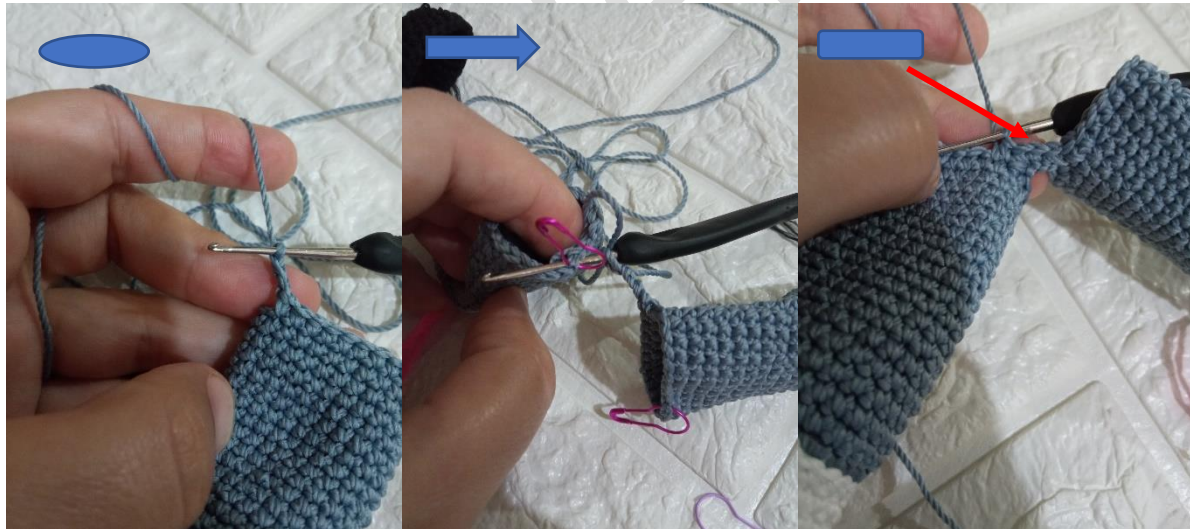
Row 25: **in back loops only**: \*1sc, inc, 1sc\* repeat till end (24) **with grey**

Row 26-44: 1sc in each stitch (24)

- Mark stitch 3
- Yarn off
- Make the second leg the same way but this time DO NOT yarn off
- Do the following instead to connect the legs:

Row 45:

- Step 1: 14sc in leg 2,
- Step 2: ch3, 
- Step 3: 1sc in each stitch of leg 1 (24)(start in marked stitch 3) 
- Step 4: 3sc in the back loops of the chains from step 2, 
- Step 5: 1sc in each of the 10 remaining stitches of leg 2 (=54sc/chs in total)



Row 46: 1sc, inc, 11sc, inc, 3sc, inc, 11sc, inc, 10sc, inc, 3sc, inc, 9sc (60)

Row 47: \*9sc, inc\* repeat till end (66)

Row 48: \*21sc, inc\* repeat till end (69)

Row 49: \*11sc, inc, 11sc\* repeat till end (72)

Row 50: 46sc, inc, 20sc, inc, 4sc (74)

Row 51: 53sc, inc, 10sc, inc, 9sc (76)

Row 52: 52sc, inc, 14sc, inc, 8sc (78)  
Row 53: 52sc, inc, 16sc, inc, 8sc (80)  
Row 54: 58sc, inc, 4sc, inc, 16sc (82)  
Row 55: 59sc, inc, 4sc, inc, 17sc (84)  
Row 56-60: 1sc in each stitch (84)  
Row 61: 1sc in each **front loop** (84) **with pink**  
Row 62: **in back loops only**: \*3sc **with cream**, 3sc with **blue**\* repeat till end (84)  
Row 63: 1sc in each **back loop** (84) **with pink**  
Row 64: 1sc in each **back loop** (84) **with off-white**  
Row 65: 1sc in each stitch (84)  
Row 66: 54sc, dec, 18sc, dec, 8sc (82)  
Row 67: 57sc, dec, 14sc, dec, 7sc (80)  
Row 68: 60sc, dec, 6sc, dec, 10sc (78)  
Row 69: \*12sc, dec, 12sc\* repeat till end (75)  
Row 70: 1sc in each stitch (75)  
Row 71: \*23sc, dec\* repeat till end (72)  
Row 72: 1sc in each stitch (72)  
Row 73: \*11sc, dec, 11sc\* repeat till end (69)  
Row 74: 1sc in each stitch (69)  
Row 75: \*21sc, dec\* repeat till end (66)  
Row 76: 1sc in each stitch (66)  
Row 77: \*10sc, dec, 10sc\* repeat till end (63)  
Row 78: 1sc in each stitch (63)  
Row 79: \*19sc, dec\* repeat till end (60)  
Row 80: 1sc in each stitch (60)  
Row 81: \*9sc, dec, 9sc\* repeat till end (57)  
Row 82: 1sc in each stitch (57)  
Row 83: \*17sc, dec\* repeat till end (54)

Row 84: 1sc in each stitch (54)

Row 85: \*8sc, dec, 8sc\* repeat till end (51)

Row 86: 1sc in each stitch (51)

Row 87: \*15sc, dec\* repeat till end (48)

Row 88-95: 1sc in each stitch (48)

Row 96: 6sc, dec, sc3tog, dec, 17sc, dec, sc3tog, dec, 11sc (40)

Row 97: 6sc, sc3tog, 17sc, sc3tog, 11sc (36)

Row 98: 5sc, sc3tog, 15sc, sc3tog, 10sc (32)

- Stuff well now

Row 99: 4sc, sc3tog, 13sc, sc3tog, 9sc (28)

Row 100: 3sc, sc3tog, 11sc, sc3tog, 8sc (24)

Row 101: \*1sc, dec, 1sc\* repeat till end (18)

Row 102: 1sc in each **back loop** (18) **with light brown**

Row 103-104: 1sc in each stitch (18)

- Make 1sl st in the first stitch
- Yarn off but leave a long tail
- Make the collar now

#### **Collar:**

Row 1: ch19 **with off-white**

Row 2: start in the second ch from the hook: 1sc in each ch, ch1 and turn (18)

Row 3: inc, 5sc, inc, 4sc, inc, 5sc, inc, ch1 and turn (22)

Row 4: 1sc, inc, 5sc, inc, 6sc, inc, 5sc, inc, 1sc, ch1 and turn (26)

Row 5: 1sc, inc, 8sc, inc, 4sc, inc, 8sc, inc, 1sc, ch1 and turn (30)

Row 6: 3sc, inc, 7sc, inc, 6sc, inc, 7sc, inc, 3sc, ch1 and turn (34)

Row 7: 1sc, inc, 9sc, inc, 10sc, inc, 9sc, inc, 1sc, ch1 and turn (38)

- Yarn off but leave a long tail
- Sew the first row of the collar to the front loops of row 101 of the body and with the short sides of the collar center front on the neck (see pictures on the next page)





**Top of shoes (make 2):**

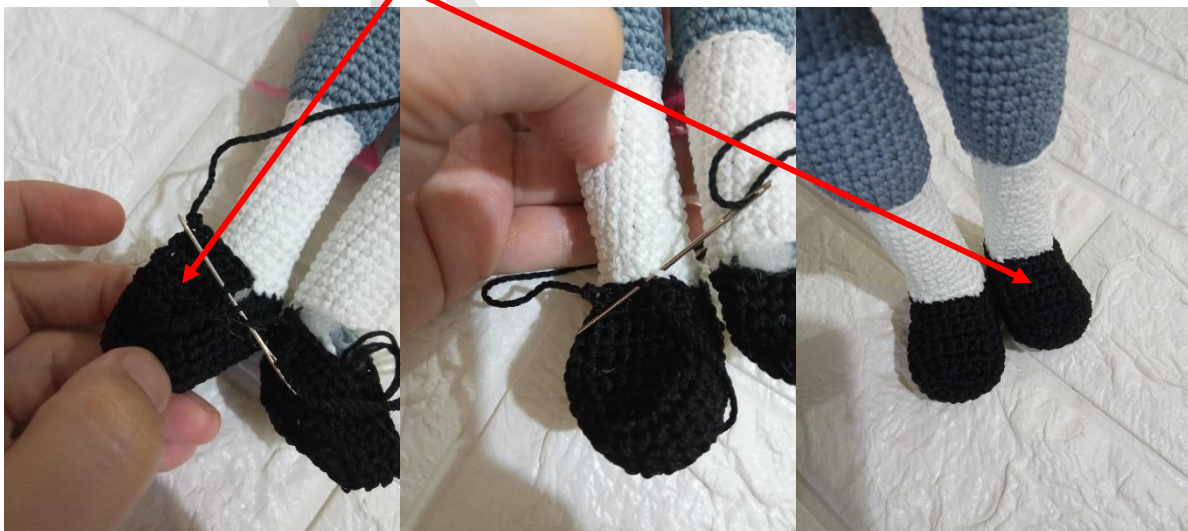
Row 1: ch7 **with black**

Row 2: start in the second ch from the hook: 1sc in each ch, ch1 and turn (6)

Row 3-8: 1sc in each stitch, ch1 and turn (6)

Row 9: dec, 2sc, dec (4)

- Yarn off but leave a long tail
- Make another piece like this
- Sew but in place on the shoes





### Border of pants:

- Ch19 **with pink**
- Yarn off but leave a tail
- Make another chain like that
- Sew them in place



### Head:

Row 1: 6sc in a magic ring **with light brown**

Row 2: inc in every stitch (12)

Row 3: \*1sc, inc\* repeat till end (18)

Row 4: \*1sc, inc, 1sc\* repeat till end (24)

Row 5: **inc 3 times**, 9sc, **inc 3 times**, 9sc (30)

Row 6: **3 times \*1sc, inc\***, 9sc, **3 times \*1sc, inc\***, 9sc (36)

Row 7: **3 times \*1sc, inc, 1sc\***, 9sc, **3 times \*1sc, inc, 1sc\***, 9sc (42)

Row 8: **3 times \*inc, 3sc\***, 9sc, **3 times \*inc, 3sc\***, 9sc (48)

Row 9: 31sc, inc, 1sc, inc, 14sc (50)

Row 10: 1sc in each stitch (50)

Row 11: 33sc, inc, 16sc (51)

Row 12: 1sc in each stitch (51)

Row 13: 32sc, inc, 2sc, inc, 15sc (53)

Row 14: 1sc in each stitch (53)

Row 15: 33sc, inc, 2sc, inc, 16sc (55)

Row 16: 1sc in each stitch (55)

- Mark stitch 26 and 46 for the eyes later

Row 17: 17sc, inc, 2sc, inc, 2sc, inc, 23sc, inc, 2sc, inc, 2sc, inc, 1sc (61)

Row 18: 1sc in each stitch (61)

Row 19: 39sc, inc, 21sc (62)

Row 20-25: 1sc in each stitch (62)

Row 26: 1sc, dec, 21sc, dec, 15sc, dec, 3sc, dec, 14sc (58)

Row 27: 8sc, dec, 5sc, dec, 20sc, dec, 5sc, dec, 12sc (54)

Row 28: 6sc, dec, 7sc, dec, 16sc, dec, 1sc, dec, 1sc, dec, 1sc, dec, 10sc (48)



Row 29: \*3sc, dec, 3sc\* repeat till end (42)

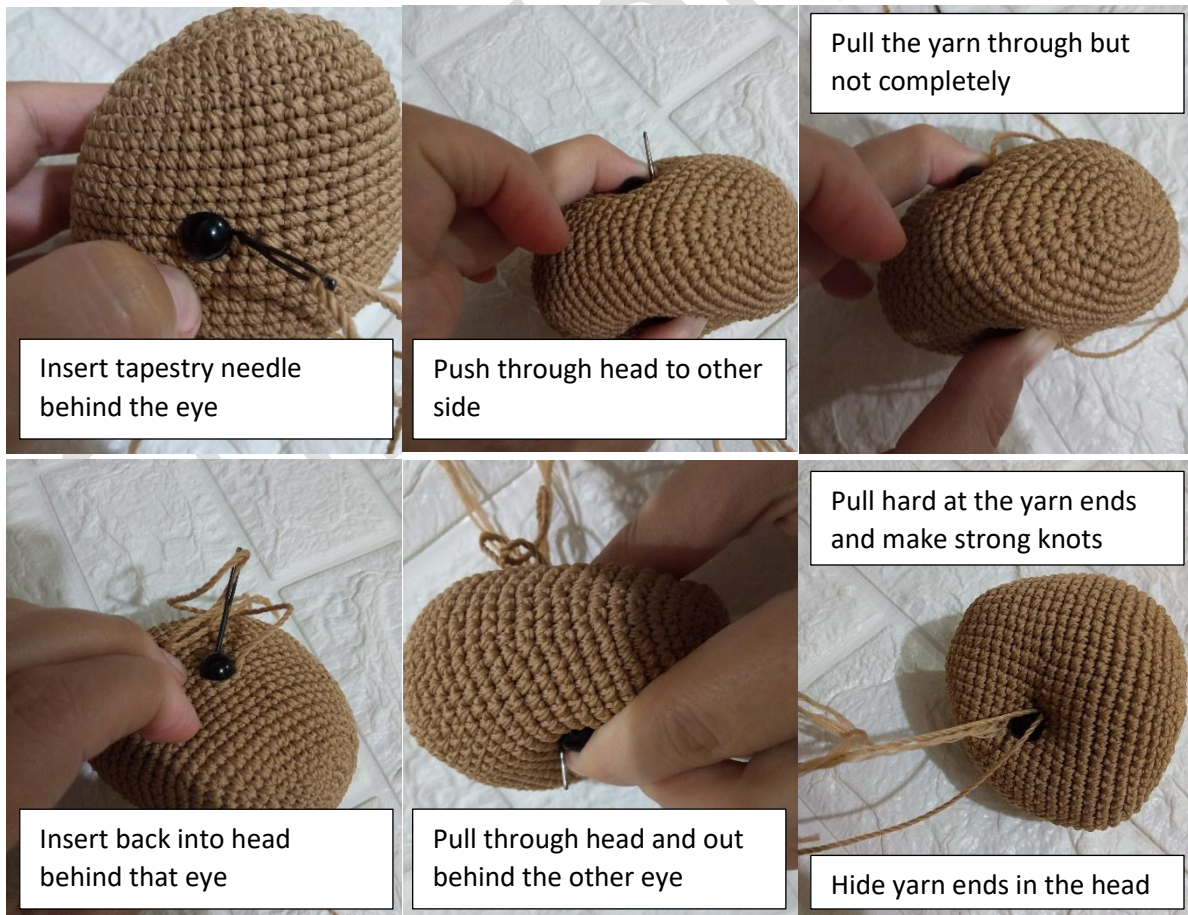
Row 30: \*5sc, dec\* repeat till end (36)

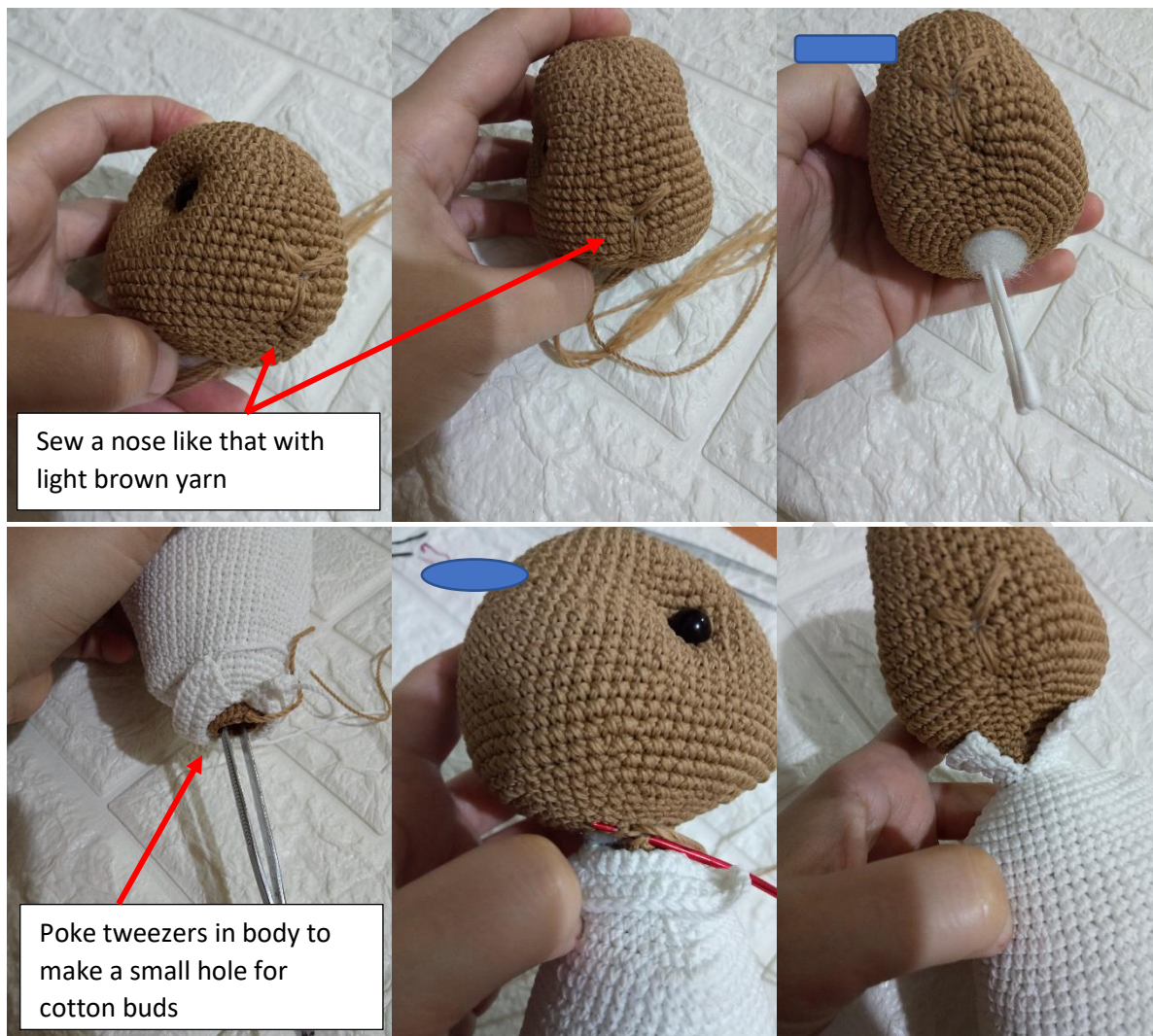
Row 31: \*2sc, dec, 2sc\* repeat till end (30)

Row 32: \*3sc, dec\* repeat till end (24)

Row 33: \*1sc, dec, 1sc\* repeat till end (18)

- Yarn off
- Insert the safety eyes in the marked stitches of row 16
- Stuff the head well but without creating holes
- Pull the eyes together a bit with a piece of yarn and sew a nose with light brown yarn
- Insert cotton buds into the head but make sure about half the length of the cotton buds is still visible 
- Insert them into the body and sew the head to the neck 





### Coat:

Row 1: ch13 **with green**

Row 2: start in the second ch from the hook: 1sc in each ch, ch1 and turn (12)

Row 3: **\*1sc, inc\*** repeat till end, ch1 and turn (18)

Row 4: **\*1sc, inc, 1sc\*** repeat till end, ch1 and turn (24)

Row 5: **\*3sc, inc\*** repeat till end, ch1 and turn (30)

Row 6: **\*2sc, inc, 2sc\*** repeat till end, ch1 and turn (36)

Row 7: **\*inc, 5sc\*** repeat till end, ch1 and turn (42)

Row 8-12: 1sc in each stitch, ch1 and turn (42)

Row 13: inc, 16sc, inc, 6sc, inc, 16sc, inc, ch1 and turn (46)



Row 14: 9sc, inc, 26sc, inc, 9sc, ch1 and turn (48)  
Row 15: inc, 17sc, inc, 10sc, inc, 17sc, inc, ch1 and turn (52)  
Row 16: 12sc, inc, 26sc, inc, 12sc, ch1 and turn (54)  
Row 17: 5sc, inc, 42sc, inc, 5sc, ch1 and turn (56)  
Row 18-20: 1sc in each stitch, ch1 and turn (56)  
Row 21: 20sc, inc, 14sc, inc, 20sc, ch1 and turn (58)  
Row 22-24: 1sc in each stitch, ch1 and turn (58)  
Row 25: inc, 56sc, inc, ch1 and turn (60)  
Row 26: 1sc in each stitch, ch1 and turn (60)  
Row 27: 5sc, inc, 48sc, inc, 5sc, ch1 and turn (62)  
Row 28: inc, 24sc, inc, 10sc, inc, 24sc, inc, ch1 and turn (66)  
Row 29-31: 1sc in each stitch, ch1 and turn (66)  
Row 32: dec, 62sc, dec, ch1 and turn (64)  
Row 33: 1sc in each stitch, ch1 and turn (64)  
Row 34: dec, 60sc, dec, ch1 and turn (62)  
Row 35: dec, 58sc, dec, ch1 and turn (60)  
Row 36: dec, 56sc, dec, ch1 and turn (58)  
Row 37: dec, 54sc, dec, ch1 and turn (56)  
Row 38: dec, 52sc, dec, ch1 and turn (54)  
Row 39: dec, 50sc, dec, ch1 and turn (52)  
Row 40: dec, 48sc, dec, ch1 and turn (50)  
Row 41: dec, 46sc, dec, ch1 and turn (48)  
Row 42: dec, 44sc, dec, ch1 and turn (46)  
Row 43: dec, 42sc, dec, ch1 and turn (44)  
Row 44: dec, 40sc, dec, ch1 and turn (42)  
Row 45: dec, 38sc, dec, ch1 and turn (40)  
Row 46: dec, 36sc, dec, ch1 and turn (38)  
Row 47: dec, 34sc, dec, ch1 and turn (36)

Row 48: dec, 32sc, dec, ch1 and turn (34)

Row 49: dec, 30sc, dec, ch1 and turn (32)

Row 50: 1sc in each stitch, ch1 and turn (32)

Row 51: dec, 28sc, dec, ch1 and turn (30)

Row 52: 1sc in each stitch, ch1 and turn (30)

Row 53: dec, 26sc, dec, ch1 and turn (28)

Row 54: 1sc in each stitch, ch1 and turn (28)

Row 55: dec, 24sc, dec, ch1 and turn (26)

Row 56: 1sc in each stitch, ch1 and turn (26)

Row 57: dec, 22sc, dec, ch1 and turn (24)

Row 58: dec, 20sc, dec, ch1 and turn (22)

Row 59: dec, 18sc, dec, ch1 and turn (20)

Row 60: dec, 16sc, dec, ch1 and turn (18)

Row 61: dec, 14sc, dec, ch1 and turn (16)

Row 62: dec, 12sc, dec, ch1 and turn (14)

Row 63: dec, 10sc, dec, ch1 and turn (12)

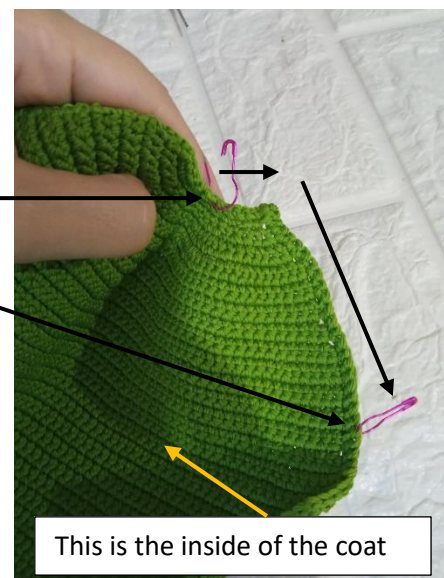
Row 64: dec, 8sc, dec, ch1 and turn (10)

Row 65: sc all around the coat but in each corner **at the top** you make **2 extra sc** and in each corner at the bottom you make **1 extra sc**

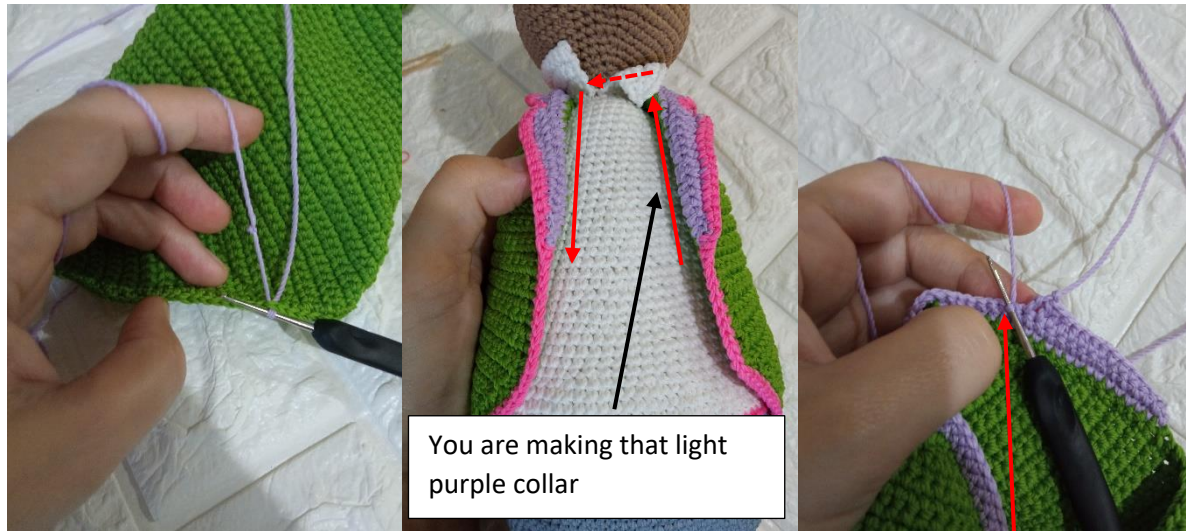
- Make 1sl st in the first stitch
- Yarn off

#### Collar of coat:

- Find the middle stitch of the neckline of the coat and count 29 stitches to the right (these 29stitches INCLUDES that middle of the neckline stitch)
- Mark that 29<sup>th</sup> stitch
- With the OUTSIDE of the coat facing you, start the following (see next page) in that 29<sup>th</sup> stitch:



Row 1: 57sc up along the side, then along the neckline, then down the other side of the coat **with light purple**, then turn (do NOT make a ch1 before turning)



Row 2: 57sc, turn (do not ch1 before turning) (57)

Row 3:

- **Step 1:** 4sl st, 3sc, 4hdc, 4dc (15)
- Leave the rest of the light purple stitches unworked for now
- Yarn off
- Reattach the light purple yarn to the second stitch next to the last dc you just made
- Start the following in that second stitch:
- **Step 2:** ch2 (does NOT count as a stitch), then \*2dc, dc inc, 2dc\* do what is between the \*...\* 5 times (=30dc in total)
- Yarn off
- Reattach the light purple yarn to the second stitch next to the last dc you just made
- Start the following in that second stitch:
- **Step 3:** ch2 (does NOT count as a stitch), then 4dc, 4hdc, 3sc, 4sl st (15)

Row 4: sc all around the coat (also around the collar) **with pink** (in each corner make 1 extra sc)

- Make sure the OUTSIDE of the coat is facing you when doing row 4
- Make 1sl st in the first stitch
- Yarn off
- Put the coat aside for later
- Make the cravat first:



### Cravat:

Row 1: ch19 **with cream**

Row 2: start in the second ch from the hook: 1sc in each ch, ch1 and turn (18)

- Yarn off
- Reattach this yarn to stitch 9
- Start the following in this stitch 9

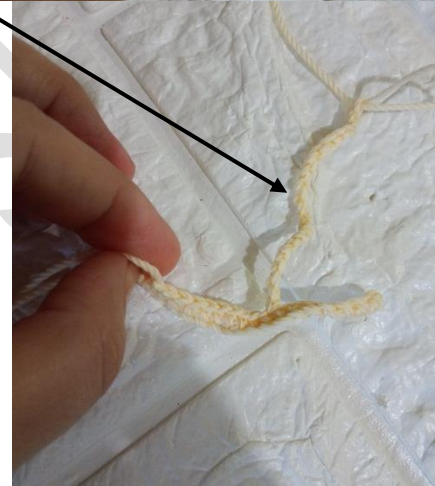
Row 3: ch21

Row 4: start in the second ch from the hook: 3dc in each ch, then 1sc in the next stitch of row 2 (60)

Row 5: repeat row 3

Row 6: repeat row 4

- Yarn off
- Sew the cravat around the neck
- Sew or glue the coat in place



With a drop of glue, glue the cravat curls against the shirt

### Arms (make 2):

Row 1: 6sc in a magic ring **with light brown**

Row 2: inc in every stitch (12)

Row 3: \*1sc, inc\* repeat till end (18)

Row 4: \*5sc, inc\* repeat till end (21)

Row 5-9: 1sc in each stitch (21)

Row 10: \*5sc, dec\* repeat till end (18)

Row 11: \*1sc, dec\* repeat till end (12)

- Stuff the hand lightly. You want to be able to flatten the hand so do not stuff till the hand is stiff

Row 12: **in front loops only**: \*1sc, inc\* repeat till end (18) **with pink**

Row 13: \*1sc, inc, 1sc\* repeat till end (24)

- Place upside down on cardboard, trace around twice and cut out (you will need 1 cardboard piece for each arm)

Row 14: 1sc in each **back loop** (24)

Row 15: 1sc in each stitch (24) **with light purple**

Row 16: 1sc in each stitch (24)

Row 17: 1sc in each stitch (24) **with green**

- Glue 1 cardboard piece in the sleeve

Row 18-21: 1sc in each stitch (24)

Row 22: \*5sc, dec, 5sc\* repeat till end (22)

Row 23-26: 1sc in each stitch (22)

Row 27: \*9sc, dec\* repeat till end (20)

Row 28-43: 1sc in each stitch (20)

Row 44: \*4sc, dec, 4sc\* repeat till end (18)

Row 45: \*1sc, dec\* repeat till end (12)

- Stuff the arm but make sure it's still soft enough to easily bend it

Row 46: dec 6 times (6)

- Yarn off but leave a tail
- Make the second arm the same way
- Sew them in place



## Hat:

Row 1: 6sc in a magic ring **with green**

Row 2: inc in every stitch (12)

Row 3: \*1sc, inc\* repeat till end (18)

Row 4: \*1sc, inc, 1sc\* repeat till end (24)

Row 5: \*3sc, inc\* repeat till end (30)

Row 6: \*2sc, inc, 2sc\* repeat till end (36)

Row 7: \*5sc, inc\* repeat till end (42)

- Place on cardboard, trace around once and cut out

Row 8: 1sc in each **back loop** (42)

Row 9: dec, 40sc (41)

Row 10: 1sc in each stitch (41)

- Glue the cardboard piece in the hat

Row 11: dec, 39sc (40)

Row 12-19: 1sc in each stitch (40)

Row 20: 1sc in each stitch (40) **with light purple**

Row 21: 1sc in each stitch (40)

Row 22: \*19sc, inc\* repeat till end (42) **with pink**

Row 23: **in back loops only:** \*3sc, inc, 3sc\* repeat till end (48) **with green**

Row 24: \*7sc, inc\* repeat till end (54)

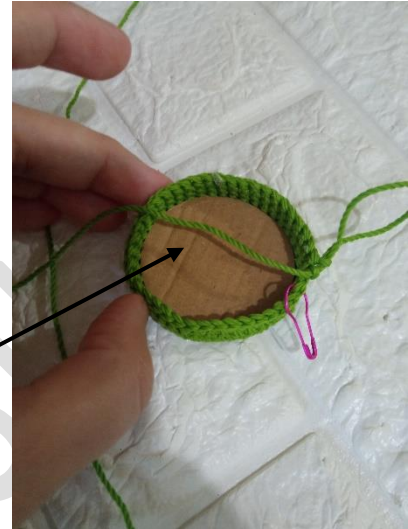
Row 25: \*4sc, inc, 4sc\* repeat till en (60)

Row 26: \*9sc, inc\* repeat till end (66)

Row 27: \*5sc, inc, 5sc\* repeat till end (72)

Row 28: \*11sc, inc\* repeat till end (78)

- Make 1sl st in the first stitch
- Yarn off
- Put the hat aside and make the ears first



### Ears (make 2):

Row 1: 8sc in a magic ring **with light brown**

Row 2: 7sc, inc (9)

Row 3: 4sc, inc, 4sc (10)

Row 4: 9sc, inc (11)

Row 5: 5sc, inc, 5sc (12)

Row 6: 11sc, inc (13)

Row 7: 6sc, inc, 6sc (14)

Row 8: 13sc, inc (15)

Row 9: 7sc, inc, 7sc (16)

Row 10: 15sc, inc (17)

Row 11: 8sc, inc, 8sc (18)

Row 12: 17sc, inc (19)

Row 13: 9sc, inc, 9sc (20)

Row 14: 19sc, inc (21)

Row 15: 10sc, inc, 10sc (22)

Row 16: 21sc, inc (23)

Row 17: 11sc, inc, 11sc (24)

Row 18: 23sc, inc (25)




Row 19: 12sc, inc, 12sc (26)

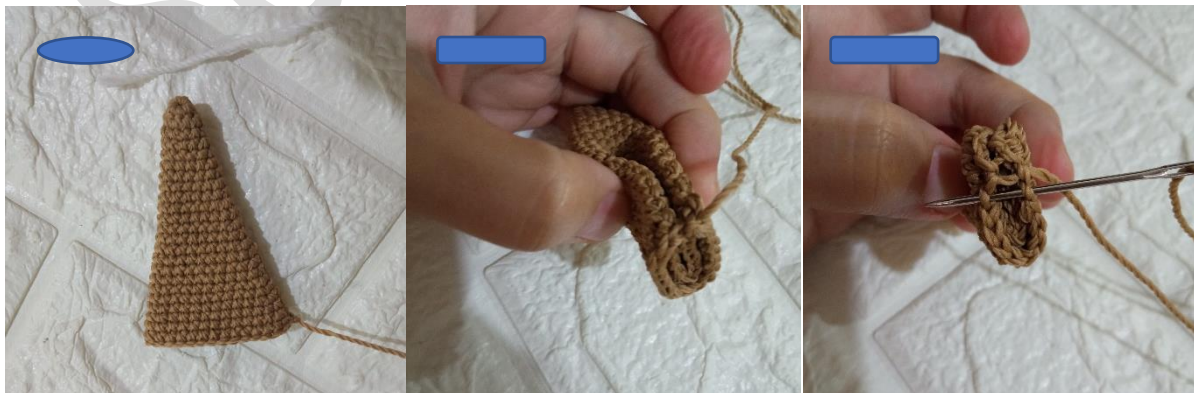
Row 20: 25sc, inc (27)

Row 21: 13sc, inc, 13sc (28)

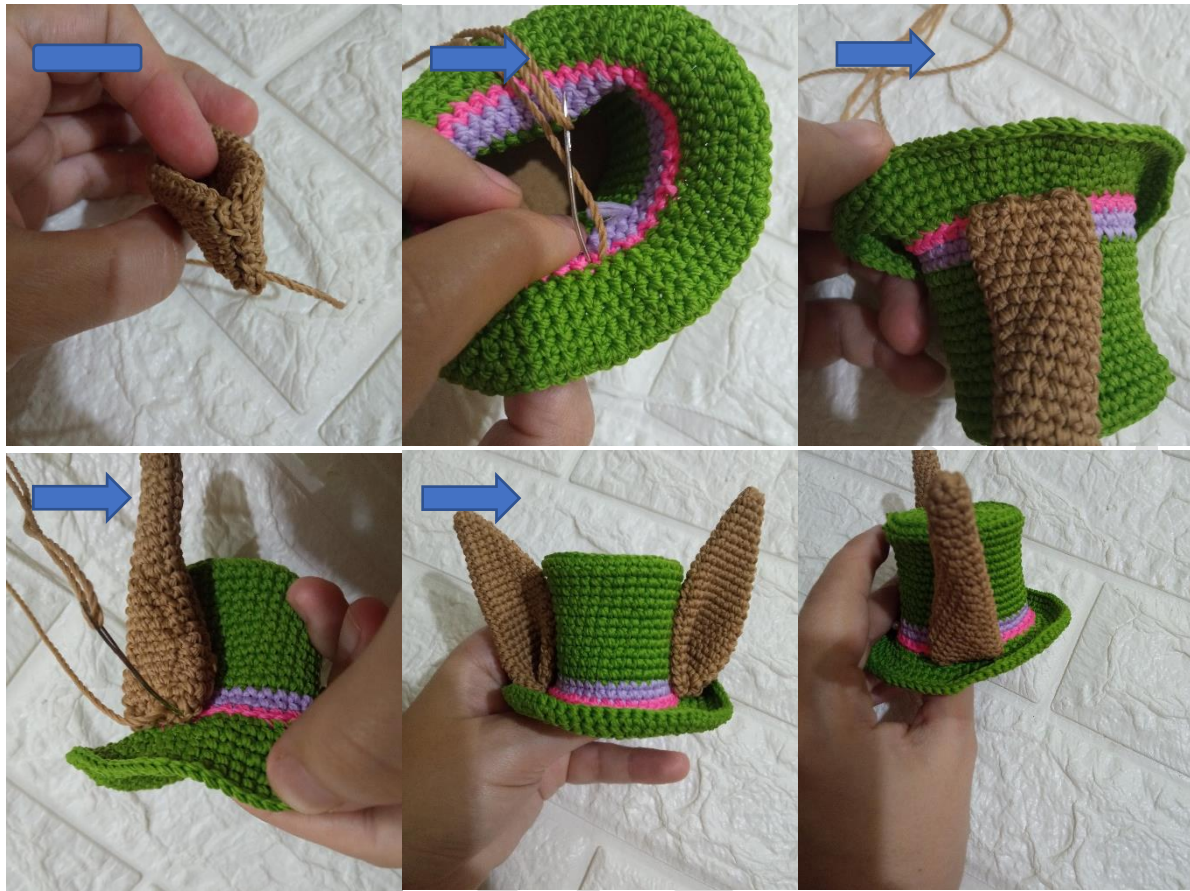
Row 22: 27sc, inc (29)

Row 23: 14sc, inc, 14sc (30)

- Make 1sl st in the first stitch
- Yarn off but leave a long tail
- Flatten the ear with stitch 1 on the side, not in the middle 
- Sew the ear like in the pictures 
- Make the second ear the same way
- Sew the ears in place on the hat 
- Glue the ears against the top border of the hat with a drop of glue
- Stuff the hat lightly
- Glue the hat on the head







- Cut a cane (walking stick) the height the shoes + legs till waistband (I used a wooden chopstick)
- Glue against the bottom of the bunny's hand

### Contact Information:

In case you have questions about the pattern or any of my other Craftygenesindonesia patterns, do send me a message here: [craftygenesindonesia@gmail.com](mailto:craftygenesindonesia@gmail.com).

### My Social Media:

- \*Facebook group (in Dutch): **Haken met Sofie's haakpatronen**
- \*Facebook group (in English and Dutch): **Amigurumi Heaven**
- \*Instagram: (in English and Dutch): **@craftygenesindonesia**
- \*Twitter: (in English): **@craftygenesind1**
- \*Pinterest: **@craftygenesindonesia**



## Useful Tutorials

### The magic ring:



In this video how I make a very simple magic ring. No weird steps involved in this one. It's really simple.

You can find this video on my YouTube channel: [@Craftygenesindonesia](#)

---

### Reading (difficult) rows:



Not everyone knows how to read a crochet pattern or the rows in it. So I made you this article on my blog. In it I explain how to read the rows. From the easiest to the most difficult row!

You can find this article in the TUTORIAL category of my blog on [Craftygenesindonesia.com](#) website: [How to read a written crochet pattern - difficult crochet rows explained - Craftygenesindonesia](#)

---

### Attaching arms:



In this YouTube video I show how I attach arms.

You can find this video on my YouTube channel: [@craftygenesindonesia](#)